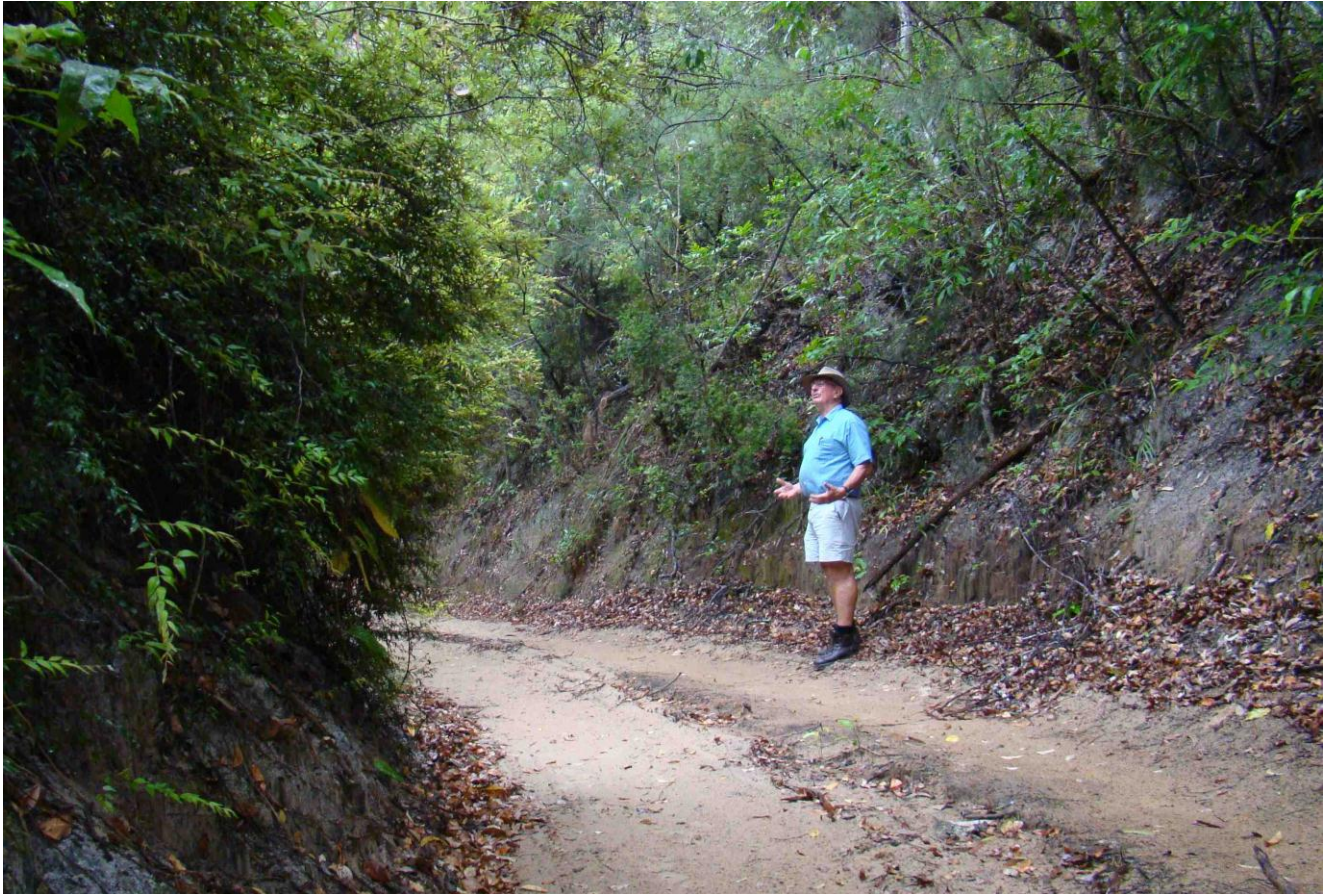


Cause and effect at Yidney Lake



During FIDO's 41 year life this Happy Valley to Moon Point Road has been eroded to a depth of more than four metres. This is just part of the down-cutting of roads adjacent to Yidney Lake.



Such down-cutting along "roads" is transforming Fraser Island's geomorphology in many places, but none more seriously than where that sediment is filling lakes. So much road sediment has flowed into Yidney Lake that a forest of Eucalypts now grows in what used to be a permanent water body. **The Australian Government bears some responsibility for allowing the death of one of Fraser Island's outstanding universal World Heritage values**