

QPWS

Values Based Management Framework



Accountability and transparency in park management



Why the Values Based Management Framework

To strive for a protected area system that is one of the best in the world. One that is resilient, adaptable and valued by the community.

With innovation and a contemporary approach— we will hone in on what is most important, focussing our effort and resources, testing our approach, and asking if we can do better.

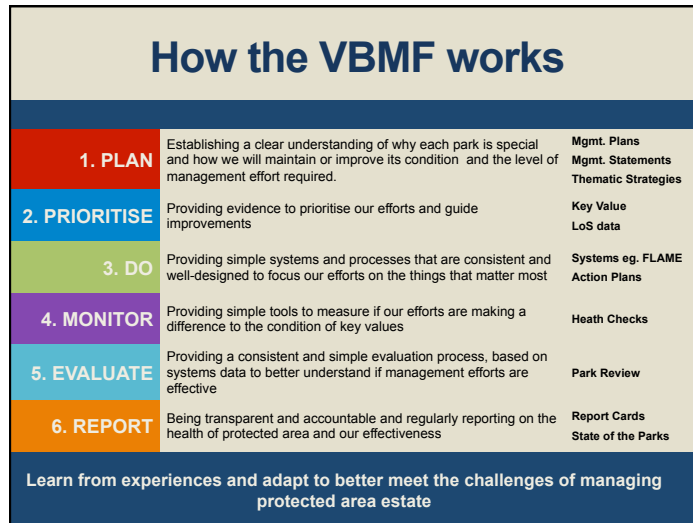


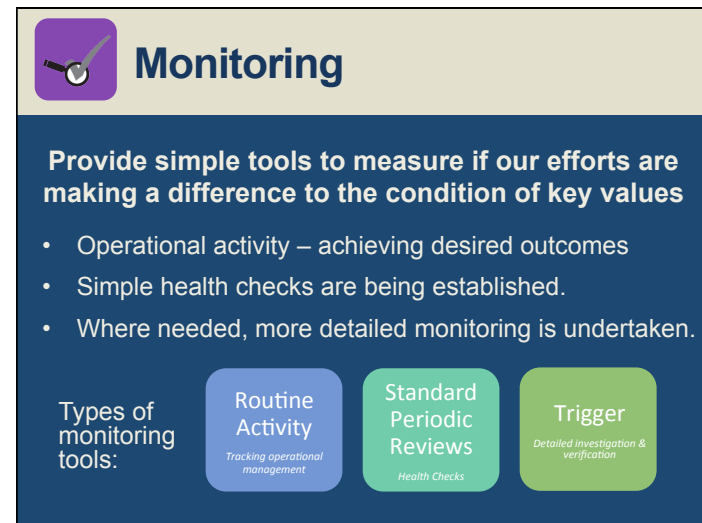
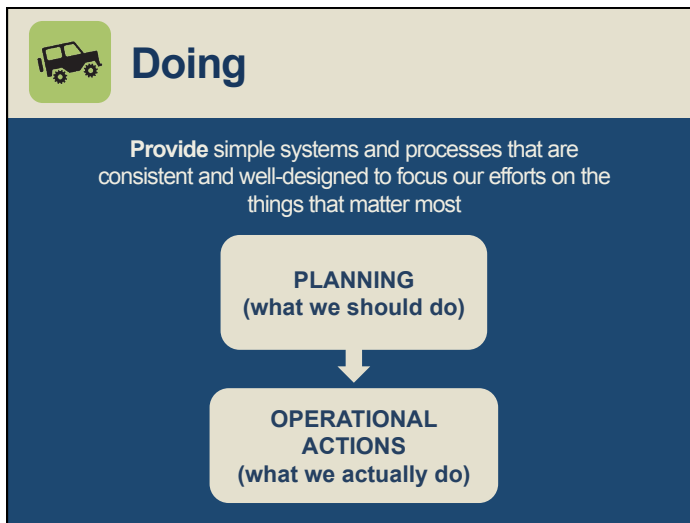
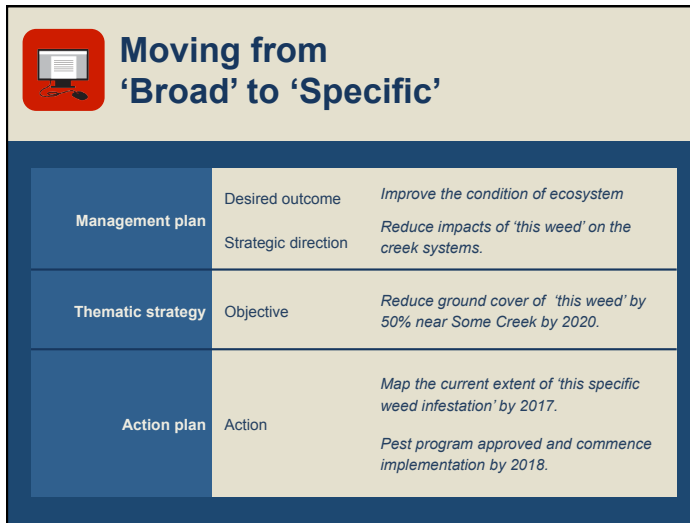
What is the 'Values Based Management Framework'?


It is an 'adaptive management model' based on ICUN best practice standards

Implementing a simple, effective and user-friendly approach to management:








Standard Periodic Reviews

Health Checks


WHY	Evaluate the condition of Key Values at the ecosystem level (natural, visitor and historic cultural).
WHAT	Basic monitoring of key values using Health Checks
HOW	Structured observations using Health Check tool.
WHO	Operational staff with support



Trigger

Detailed investigation & verification

WHY	Triggered where reliable information and knowledge is lacking about the condition of values (and monitoring is beyond the scope of health checks i.e. for species).
WHAT	Detailed assessment or monitoring and verification of data.
HOW	Coordinated, approved projects using 'fit for purpose' methods for data collection, management and analysis.
WHO	Specialist regional or centric staff to coordinate, lead or mentor, or external specialists as required.



Evaluation

Park Review Program

Do we have the right management tools in place?
Are doing what we said we would?
Is what we are doing effective?

Delivers a simple outcomes-focussed analysis of our performance as park managers

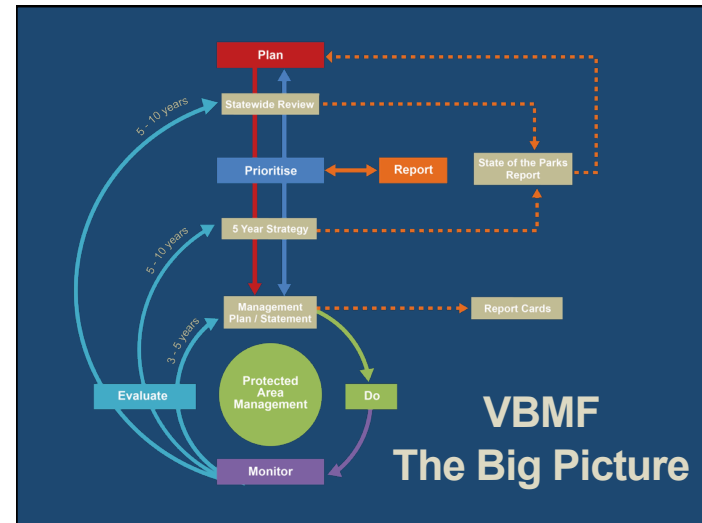


Reporting



Our Iconic Parks

Boodjamulla (Lawn Hill) National Park
 Carnarvon National Park
 Daintree National Park
 Great Barrier Reef Marine Park
 Great Sandy National Park
 Hinchinbrook Island National Park
 Lamington National Park
 Moreton Bay Marine Park
 Rinyirru (Lakefield) National Park (CYPAL)
 Whitsunday Islands National Park



Great Sandy Area




- Draft Management plan and visitor strategy have been prepared
- Seeking Ministerial approval to release for public consultation


Indigenous: Connection to Country

Traditional Owners' Connection to Country
 Butchulla People
 Kabi Kabi First Nation






Ecosystems services:
Aesthetic and geomorphological value
World Heritage Criterion 7



Ecosystems and biodiversity:
Parabolic dunes and associated communities
World Heritage Criteria 7, 8 and 9



Ecosystems and biodiversity:
Lakes, rivers and wetlands
World Heritage Criteria 7 and 8



Habitat for significant species:
Heath communities
World Heritage Criterion 9



Historic cultural heritage:
Queensland Heritage Register sites



Sandy Cape lightstation
© Queensland Heritage Register



Double Island Point lightstation
© Queensland Heritage Register



Woody Island lighthouse
© Queensland Heritage Register



Mill Point settlement site © Queensland Heritage Register



Remnants of the Pettigrew's Cooloola timber tramway
© Queensland Heritage Register




Ecotourism and recreational opportunities

- Beach Camping Experience
- 4WD touring Experiences
- Lake Experience
- Central Station Rainforest Experience
- Eli Creek
- Dingo Experience
- Coloured Sands
- Everglades Experience

